

one**WORLD**.one**DURA**.



DURA[®]
Automotive Systems

Innovation driven by inspiration.[™]

12,000 employees around the world,
all inspired to deliver excellence and
performance for our customers.

► Company Profile

DURA Automotive Systems is the world's leading independent designer and manufacturer of driver control systems, seating control systems, safety hardware, structural body systems, exterior trim and integrated glass systems.

With a presence on more than 300 models worldwide, DURA markets automotive products to every original equipment manufacturer (OEM) in the America's, Asia and Europe. The company also is a supplier partner to the world's leading Tier One automotive suppliers.

DURA is majority owned by Patriarch Partners LLC., and is nationally certified in the United States by the Women's Business Enterprise Council (WBE).



Sales: (USD)\$1.6 Billion *

Headquarters: Auburn Hills, Michigan, USA

Worldwide Locations: 36

Employees: 12,000**

Global Presence: 15 Countries

Product Groups: Control Systems
Exterior Systems
Structural Systems

*Figures based on 2015 DURA Automotive & Global Automotive Systems combined sales

**Employee count as of January 1, 2014

Inspired by
NEW POSSIBILITIES



► Worldwide Presence

DURA North America

	United States	9 Locations 1 Location*
	Mexico	3 Locations
	Canada	1 Location

DURA South America

	Brazil	1 Locations 1 Location*
--	--------	----------------------------

DURA Europe




















	Germany	6 Locations 3 Locations*
	United Kingdom	1 Location
	France	2 Locations 1 Location*
	Portugal	2 Locations
	Czech Republic	3 Locations
	Romania	1 Location

DURA Asia

	China	3 Locations 1 Location*
	Japan	1 Location
	Korea	1 Location
	India	1 Location 1 Location*

*Technical and sales offices.

► Global Customer Portfolio

 VW Group	14.9%	 Ford	14.5%	 FCA <small>FIAT CHRYSLER AUTOMOBILES</small>	11.8%	 General Motors	9.2%
 BMW Group	5.5%	 RENAULT NISSAN	4.3%	 PSA PEUGEOT CITROËN	3.7%	 JAGUAR LAND ROVER	3.4%
DAIMLER	4.2%	 HONDA	1.1%	 TOYOTA	0.6%	 VOLVO	0.6%
 Johnson Controls CRH	5.9%	 ZF	1.9%	 brose	0.9%	 TRW	0.6%
 kiekert	0.6%	 JOHN DEERE	0.5%	 nexteer <small>AUTOMOTIVE</small>	0.4%	 BOSCH	0.2%
Tier 2, Mass Transit, Industrial and Other Customers						15.2%	

Providing quality products for more than **300 MODELS** worldwide.

“We believe in doing the **right thing**, the **right way**,
for the **right reasons**.”

► **Company Mission**

Our mission not only leads us, it inspires us with a common purpose

DURA’s mission is to inspire:

drivers, through exceptional vehicle interactions, such as the feel of a shifter or the mirror finish on a 10-year-old trim

customers, through a game-changing design, an immediate remedy to a critical supply problem, or daily confidence in best-in-class quality

our people, through a unique culture, purpose and pride in DURA

competitors, through leading by example, creating benchmarks to which they aspire

our stakeholders, through working together to deliver exceptional value creation for all

DURA’s mission is inspiration fueled by innovation and performance.



Inspired by

Sustainable Development

DURA recognizes the shared responsibility of our business community to support the needs of present generations without jeopardizing the ability of future generations to meet their own. Driven by DURA’s senior leadership, our sustainable development principles are centered on integrating the economic, environmental and social components of each company initiative. Throughout our company and across the globe, we believe in doing the right thing, the right way, for the right reasons.

Automatic
Shift Systems



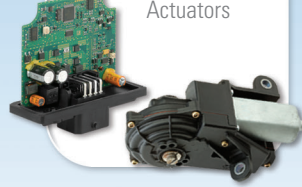
Manual Shift
Systems



Guide Controls and
Inertia Modules



DigiShift™
Shift-by-Wire
Actuators



Electronic
Shifter Controls



Inspired by
PERFORMANCE ...

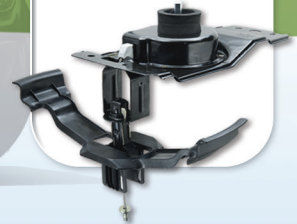
Mechatronic Park
Lock Actuators



High Performance
Shift Cables



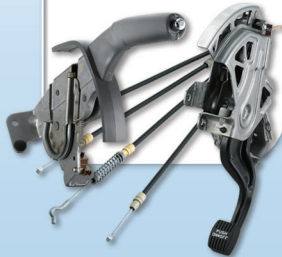
Tire Carriers



Light Duty Cables



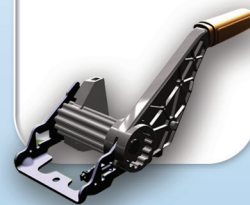
Parking Brake
Systems



Traditional &
Adjustable
Pedal Systems



Lightweight Driver
Control Systems

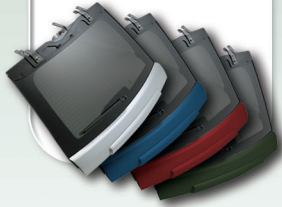


Hood Latch Systems

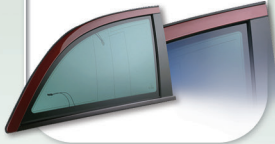


- **DURA** excels in creating driver-to-machine interfaces tailored to your preferred vehicle experience. Our safety-critical products include shifter and cable systems, parking brake systems, pedals, tire carriers, safety hardware and mechatronic actuators. Built on a heritage of innovation, our global engineering teams partner with you to create revolutionary products that optimize haptics, driving performance and safety.

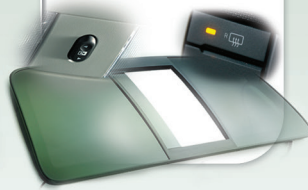
Integrated Liftgate
Systems & Modules



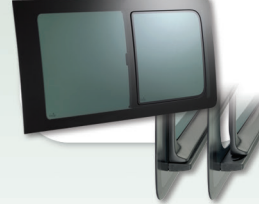
Encapsulated
Glass



Power Heated Rear
Sliding Windows



Sliding Window
Systems with Flush
Glazing Glass



Mass Transit
Glass Systems



ENDURING BEAUTY ...

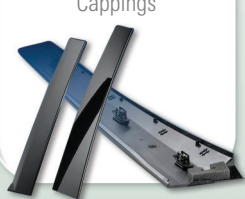
Decorative Trim
Components



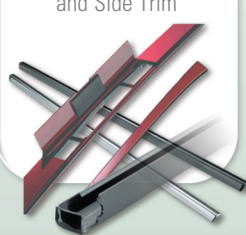
Metal Pillar
Cappings



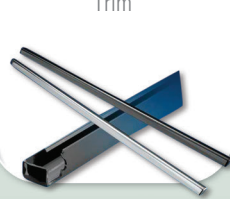
Plastic Pillar
Cappings



Exterior Roof
and Side Trim



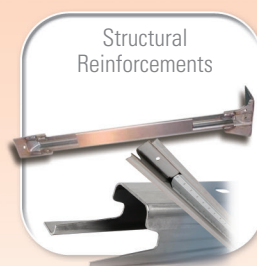
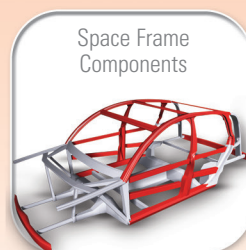
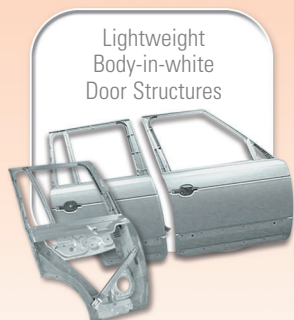
Door Upper
Trim



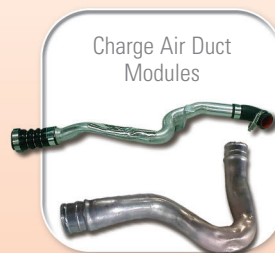
Door Waistline
Trim



- **DURA** creates award-winning glass and trim solutions with a premium finish designed to endure the test of time. Advanced forming techniques in stretch bending, rollforming and encapsulation combine with proprietary surface treatments to produce a superior product of the highest quality and beauty. Our product expertise includes complete exterior trim systems, integrated glass systems and decorative body components.



and SAFETY



- **DURA** leads the industry in advanced material forming and joining technologies to create innovative products with optimized strength-to-weight ratios. From component supply to integrated structures, our areas of focus include space frames, cross car beams, seating systems, door systems, suspension products and steering components. We are experts in fabricating with lightweight and tailored materials including aluminum, composites and high strength steels.



**DURA NORTH AMERICA
WORLDWIDE HEADQUARTERS
& TECHNOLOGY CENTER**

DURA Automotive Systems
1780 Pond Run
Auburn Hills, MI 48326
U.S.A.
Ph: +1 (248) 299 7500
Fax: +1 (248) 299 7501

**DURA SOUTH AMERICA
BRAZIL**

DURA Automotive Systems
Ave. Dom Pedro 1, 743 - Centro
Rio Grande da Serra
Sao Paulo Brazil 09450.000
Ph: +55 (11) 4827 2000
Fax: +55 (11) 4820 1010

**DURA EUROPE
BIÈVRES, FRANCE**

DURA Automotive Systems
Sales Office
14, Parc Burospace
Route de Gisy
91570 Bièvres
France
Ph: +33 (0) 1 69 85 2550
Fax: +33 (0) 1 69 85 25 51

DÜSSELDORF, GERMANY

DURA Automotive Systems
Sales Office
Schießstraße 60
D-40549 Düsseldorf
Germany
Ph: +49 (0) 211 5972 0
Fax: +49 (0) 211 592819

EINBECK, GERMANY

DURA Einbeck GmbH
Hullerser Landstraße 16-18
D-37574 Einbeck
Ph: +49 (0) 5561 943 0
Fax: +49 (0) 5561 943 217

PLETTENBERG, GERMANY

DURA Automotive Systems
Sales Office
Königstrasse 57
D-58840 Plettenberg
Germany
Ph: +49 (0) 2391 62 0
Fax: +49 (0) 2391 62 100

**DURA ASIA
CHINA**

DURA Automotive Systems
Sales Office
2658 Jinzhang Road
Ganxiang Town, Jinshan District
Shanghai 201518 P.R. China
Ph: +(86) 21 5720 1098
Fax: +(86) 21 5720 1258

INDIA

DURA Auto Systems India Pvt. Ltd.
Sales Office & Engineering Center
Plot #2 & 3, First Floor, Ektha Towers
Kondapur, Hyderabad, AP-500084, India
Ph: +91 (40) 4432 7999
Fax: +91 (40) 4432 7998